

Ref No: BJ/ED/SPJIMR/2023/CH1247
March 20, 2023

To,
The Chairperson
The Placement Office
SP Jain Institute of Management and Research
Munshi Nagar
Andheri (W)
Mumbai 400 058

Re: Audit of the Autumn Internship Placement Report of the Post Graduate Diploma in Management (PGDM) Programme, 2018-20

Dear Sir,

CRISIL has audited the placement report prepared by SP Jain Institute of Management and Research (SPJIMR), Mumbai, for the autumn internship placements of students in the PGDM batch of 2018-20. CRISIL has validated the information provided in the report with the relevant documentation, and offers the following comments on the report's conformance to the Indian Placement Reporting Standards (IPRS) Version 2.2:

In this context, CRISIL confirms the following:

1. For the purpose of the audit, we have obtained all necessary information and explanations. We believe the Placement Report complies with the requirements of Indian Placement Reporting Standards (IPRS) Version 2.2.
2. The validation of information presented in the report is based on communication received by SPJIMR from the recruiting companies and students. CRISIL has not independently sourced any information or documentation.
3. CRISIL has verified the information with respect to job function, location and stipends presented in the report, based on communication received from the recruiters.
4. Data of 237 students was available for verification during the audit.

Thank You,

Best Regards,



Ms. Binaifer F. Jehani
Business Head- SME Solutions



Mr. Yogendra Deep Singh
Business Head - GIX





Bharatiya Vidya Bhavan's

SPJIMR

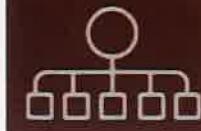
AUTUMN PLACEMENT REPORT

2018-20

**POST GRADUATE DIPLOMA IN
MANAGEMENT (PGDM)**

Contents

Classification of entire placement pool.....	3
Key Highlights.....	4
Sectoral Highlights.....	5
Functional Highlights.....	6
Location Highlights.....	7
Compliance Statement.....	8



Classification of entire placement pool

Table 1: Classification of the entire placement pool

Categories	Number
1. Total batch strength	239
1a. Total students eligible for sitting in Autumn Placements	239
1b. Total students not eligible for sitting in Autumn Placements	-
2. Total students eligible for sitting in Autumn Placements	
2a. Seeking internship through the Institute	237*
2b. Not Seeking Internship through the Institute	2
2c. Students who opted out of Autumn internship	-

*Offer letters or completion certificate of 237 students were available for verification

Nature of the internship	With Stipend	Without Stipend	Data Not Available
Seeking internship through the institute	153	-	84
Not seeking internship through the institute	-	-	-




For SPJIMR, Mumbai




For CRISIL Limited, Mumbai



Key Highlights

PGDM Program (2018-20)



**Batch size
(239 students)**



**Highest Stipend
per month
(Rs.1.60 lakh)**



**Mean Stipend per
month (Rs.1.10
lakh)**



**Number of
recruiters (58)**

For SPJIMR, Mumbai



For CRISIL Limited, Mumbai





Sectoral Highlights



- Highest offers were made in FMCG (38%) sector.
- Others includes internships for Information Technology (4%), Manufacturing (4%), Healthcare (3%), Education (2%), Telecom (1%) and Travel & Tourism (1%)

Sector-wise classification

The table below shows sector-wise break-up of the accepted offers.

Table 2: Classification of internships based on sector

Sector	Number of Offers accepted
BFSI	36
Consulting	17
E-Commerce	60
FMCG	89
Healthcare	06
Information Technology (IT)	09
Manufacturing	10
Other	05
Telecom	02
Travel & Tourism	03
Total	237

[Signature]
For SPJIMR, Mumbai



[Signature]
For CRISIL Limited, Mumbai





Functional Highlights



Marketing/Sales
(35%)



Finance
(17%)



Operations/Supply
Chain (16%)



Others (32%)

- Highest offers received for Marketing (35%) domain.
- Others include Intern/Trainee (13%), Consulting (7%), Systems / IT (6%), General Management (5%) and Human Resources (1%)

Function-wise classification

The table below shows function-wise break-up of the accepted offers.

Table 3: Classification of internships based on function

Function	Number of Offers accepted
Consulting	17
Finance	40
General Management	13
Human Resources	01
Marketing/Sales	84
Operations/Supply Chain	37
Summer Trainee	30
Systems / IT	15
Total	237

Bhish

For SPJIMR, Mumbai



Yashwanth

For CRISIL Limited, Mumbai





Location Highlights



- Highest offers received for Bangalore (28%) location.
- Location details for 42% of internship offers were not available.
- Others include internship offers from Pune, New Delhi, Hyderabad, Haryana, Dubai cumulative contribution 4%

Location-wise classification

The table below shows location-wise break-up of the accepted offers.

Table 4: Classification of internships based on location

Location	Number of Offers accepted
Bangalore	65
Data not available	100
Gurgaon	05
Haryana	01
Hyderabad	02
Mumbai	55
New Delhi	02
Noida	03
Pune	03
International	
Dubai	01
Total	237

[Signature]

For SPJIMR, Mumbai



For CRISIL Limited, Mumbai



Compliance Statement

This placement report has been prepared as per the Indian Placement Reporting Standards, Version 2.2.

Bhish



For SPJIMR, Mumbai



For CRISIL Limited, Mumbai

About CRISIL Limited

CRISIL is a leading, agile and innovative global analytics company driven by its mission of making markets function better. It is India's foremost provider of ratings, data, research, analytics and solutions with a strong track record of growth, culture of innovation, and global footprint.

It has delivered independent opinions, actionable insights, and efficient solutions to over 100,000 customers through businesses that operate from India, the US, the UK, Argentina, Poland, China, Hong Kong, UAE and Singapore.

It is majority owned by S&P Global Inc, a leading provider of transparent and independent ratings, benchmarks, analytics and data to the capital and commodity markets worldwide.

For more information, visit www.crisil.com

Connect with us: [LINKEDIN](#) | [TWITTER](#) | [YOUTUBE](#) | [FACEBOOK](#) | [INSTAGRAM](#)

About CRISIL Market Intelligence & Analytics

CRISIL Market Intelligence & Analytics, a division of CRISIL, provides independent research, consulting, risk solutions, and data & analytics. Our informed insights and opinions on the economy, industry, capital markets and companies drive impactful decisions for clients across diverse sectors and geographies.

Our strong benchmarking capabilities, granular grasp of sectors, proprietary analytical frameworks and risk management solutions backed by deep understanding of technology integration, make us the partner of choice for public & private organisations, multi-lateral agencies, investors and governments for over three decades.

CRISIL Privacy Notice

CRISIL respects your privacy. We may use your personal information, such as your name, location, contact number and email id to fulfil your request, service your account and to provide you with additional information from CRISIL. For further information on CRISIL's privacy policy please visit www.crisil.com/privacy.

Disclaimer

This Report is based on data publicly available or from sources considered reliable. CRISIL SME Solutions, a division of CRISIL Limited ("CRISIL"), does not give any guarantee on the accuracy or completeness of the Report and hence, it should not be relied upon, as such. This Report will not be kept under surveillance. Opinions expressed herein are our current opinions as on the date of this Report. Nothing in the Report constitutes investment, legal, accounting or tax advice or any solicitation, whatsoever. The subscriber/ user assume the entire risk of any use made of this data/ Report. CRISIL especially states that, it has no liability (financial or otherwise) whatsoever, to the subscribers/ users of this Report.

The Report is for use within the jurisdiction of India only. Nothing in this Report is to be construed as CRISIL providing, or intending to provide, any services in other jurisdictions where CRISIL does not have the necessary permissions and/ or registration to carry out its business activities. The user will be solely responsible for ensuring compliance for use of the Report, or part thereof, outside India.

CRISIL SME Solutions, operates independently of, and does not have access to information obtained by CRISIL Ratings Limited and/ or CRISIL Risk and Infrastructure Solutions Limited (CRIS), which may, in their regular operations, obtain information of a confidential nature. The views expressed in this Report are that of CRISIL SME Solutions, and not of CRISIL Ratings Limited or CRIS. CRISIL or its associates may have other commercial transactions with the company/entity.